



ISO 9001:2008 CERTIFIED

# ***Bimetal Industrial Thermometers***

### Order Number Description

<b>X</b>	<b>X</b>	<b>X</b>	<b>X</b>	<b>X</b>	<b>X</b>	—	<b>X</b>	<b>X</b>	<b>X</b>	<b>X</b>	<b>X</b>
Case Style	Lens Material	Dial Size		Bushing			Special Features	Temperature Ranges		Stem Length	

**Example: RG1350-R1712**  
translates to:

- R** = Rear Mounting
- G** = Glass lens
- 13** = 3" dial
- 50** = ½" NPT connection
- R** = With recalibration feature
- 17** = 50° to 400°F temperature range
- 12** = 12" stem

#### Case Styles

- R** = Rear Mounting
- B** = Bottom Mounting (3" & 5" dials only)

#### Lens Materials

- G** = Glass (not available for 4" max/min)
- P** = Acrylic
- T** = Tempered Glass  
(not available in 2" dial sizes)

#### Dial Sizes

<b>12</b> = 2"	<b>13</b> = 3"	<b>14</b> = 4"	<b>15</b> = 5"
----------------	----------------	----------------	----------------

#### Bushing

- 00** = Unthreaded (2" dial sizes only)
- 50** = ½" NPT
- 37** = ⅜" NPT (special orders only)
- 25** = ¼" NPT  
(2" dial size special orders only)

#### Special Features

- 0** = None
- R** = With recalibration (2", 3", & 5" dial sizes only)
- M** = Max/min indicating pointer (4" size only)

#### Stem Lengths

<b>25</b> = 2 ½"	<b>04</b> = 4"	<b>05</b> = 5 ½"	<b>06</b> = 6"
<b>09</b> = 9"	<b>12</b> = 12"	<b>15</b> = 15"	<b>18</b> = 18" <b>24</b> = 24"

**NOTE:** Other ranges, scales, stem lengths, dial colors, and features are available by special order if quantities justify. Call your Rochester Gauges representative or call us directly for information regarding the availability and cost of special orders.

#### Temperature Ranges

*(See series for available ranges)*

- 01** = -150° to 50°F (3" & 5" dials only)
- 03** = -50° to 120°F (excluding 4" dials)
- 06** = -40° to 160°F (5" dials only)
- 08** = 0° to 100°F (excluding 4" max./min. dials, 4" min. stem length)
- 10** = 0° to 300°F
- 11** = 0° to 500°F
- 12** = 0° to 800°F (excluding 4" max./min. dials)
- 13** = 25° to 125°F (excluding 4" max./min. dials, 4" min. stem length)
- 14** = 30° to 240°F
- 16** = 50° to 350°F (excluding 4" dials)
- 17** = 50° to 400°F
- 19** = 150° to 750°F (excluding RG1250 & 3" dials)
- 21** = 200° to 1000°F
- 24** = 0° to 220°F (excluding 4" dial)
- 25** = -70° to 150°F
- 49** = 0° to 250°F

- 
- 28** = -50° to 50°C (excluding & 4" dials)
  - 30** = -10° to 110°C
  - 31** = 0° to 50°C (excluding 4" dials, 4" min. stem length)
  - 32** = 0° to 150°C (excluding 4" dial)
  - 33** = 0° to 200°C (excluding 4" dials without max./min.)
  - 34** = 0° to 300°C (excluding & 4" dials)
  - 35** = 0° to 400°C
  - 64** = 0° to 120°C (4" dial only)

#### Dual Scale Temperature Ranges

- 40** = -70° to 50°C (excluding 4" dials)  
-90° to 130°F
- 43** = 0° to 300°C (excluding 4" dials)  
40° to 570°F
- 68** = 10° to 150°C (excluding 2" & 4" dials)  
50° to 300°F

## Application

These 2" [50 mm] thermometers are all purpose units for laboratory and general testing service. They can be inserted directly into vessels, vats, glassware or trays with simple mountings or supports or into air ducts, channels and open passages.

## Materials Of Construction\*

### Case, Stem, Bezel & Nut

Type 304 stainless steel case

### Dial

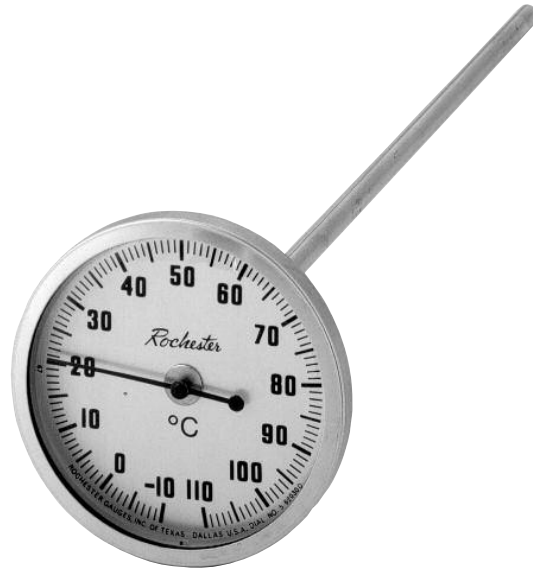
Aluminum

### Sensing element

Bimetallic

### Lens

Glass (Acrylic available at extra cost)



## General Specifications\*

It is available with or without a recal feature and it has a slender pointer to facilitate precise readings of the scale. Standard stem lengths are 6", 9", 12" and 18". Prescribed accuracy is 1% of scale range. Each thermometer is hermetically sealed and dampened.

\* Materials and specifications are subject to change without notice.  
Pressure ratings subject to change due to temperature and other environmental considerations.

## How To Order

- R** = Rear mounted
- G** = Glass lens (high ranges)
- 12** = 2" size
- 00** = Unthreaded bushing
- = Hyphen
- 0** = No special feature
- R** = Recal feature
- 24** = 0° to 220°F temperature range
- 09** = 9" stem length

**Example:** RG1200-R2409

## Available Temperature Ranges

Fahrenheit	
03	-50° to 120°
08	0° to 100°
10	0° to 300°
11	0° to 500°
13	25° to 125°
14	30° to 240°
16	50° to 350°
17	50° to 400°
19	150° to 750°
20	200° to 400°
21	200° to 1000°
24	0° to 220°
25	-70° to 150°
49	0° to 250°

Centigrade	
26	-100° to -50°
30	-10° to 110°
31	0° to 50°
32	0° to 150°
33	0° to 200°
34	0° to 300°

Dual-Scale	
40	-70° to 50°C -90° to 130°F
43	0° to 300°C 40° to 570°F

Other ranges and scales may be available if justified by quantity.

11/03/10

## Application

These 2" [50 mm] thermometers are widely used in general to heavy duty service in the oil, chemical, food, paper, textile and power industries where small size is desirable. They withstand rough field treatment and perform superbly in difficult environments.

## Materials Of Construction\*

### Case, Stem, Bezel & Nut

Type 304 stainless steel case

### Dial

Aluminum

### Sensing element

Bimetallic

### Lens

Glass (Acrylic available at extra cost)



## General Specifications\*

This thermometer is available with or without a recal feature and a 1/2" NPT threaded connection is standard. For greatest accuracy, the stem should be inserted 2" into liquids and 4" into gases. Prescribed accuracy is 1% of scale range. Each thermometer is hermetically sealed and dampened.

\* Materials and specifications are subject to change without notice.  
Pressure ratings subject to change due to temperature and other environmental considerations.

## How To Order

- R** = Rear mounted
- G** = Glass lens
- 12** = 2" size
- 50** = 1/2" NPT threaded connection
- = Hyphen
- R** = Recal feature
- 03** = -50° to 120°F temperature range
- 04** = 4" stem length

**Example:** RG1250-00304

## Available Temperature Ranges

Fahrenheit	
03	-50° to 120°
08	0° to 100°
09	0° to 200°
10	0° to 300°
11	0° to 500°
12	0° to 800°
13	25° to 125°
14	30° to 240°
16	50° to 350°
17	50° to 400°
21	200° to 1000°
24	0° to 220°
25	-70° to 150°
49	0° to 250°

Centigrade	
29	-50° to 100°
30	-10° to 110°
31	0° to 50°
32	0° to 150°
33	0° to 200°
34	0° to 300°

Dual-Scale	
40	-70° to 50°C -90° to 130°F
42	0° to 150°C 40° to 300°F
43	0° to 300°C 40° to 570°F

Other ranges and scales may be available if justified by quantity.

11/03/10

## Application

These 3" [75 mm] thermometers are used extensively in the oil, chemical, food, paper, textile and power industries because of their ability to withstand rough treatment and difficult environments.

## Materials Of Construction\*

### Case, Stem, Bezel & Nut

Type 304 stainless steel case

### Dial

Aluminum

### Sensing Element

Bimetallic

### Lens

Glass (Acrylic or tempered glass available at extra cost)



## General Specifications\*

This thermometer incorporates a recal feature and a 1/2" NPT threaded connection as standard. For greatest accuracy, the stem should be inserted 2" into liquids and 4" into gases. Prescribed accuracy is 1% of scale range. Each thermometer is hermetically sealed and dampened.

\* Materials and specifications are subject to change without notice.  
Pressure ratings subject to change due to temperature and other environmental considerations.

## Available Temperature Ranges

Fahrenheit	
01	-150° to 50°
03	-50° to 120°
08	0° to 100°
10	0° to 300°
11	0° to 500°
12	0° to 800°
13	25° to 125°
14	30° to 240°
16	50° to 350°
17	50° to 400°
21	200° to 1000°
24	0° to 220°
25	-70° to 150°
49	0° to 250°

Centigrade	
28	-50° to 50°
30	-10° to 110°
31	0° to 50°
32	0° to 150°
33	0° to 200°
34	0° to 300°
35	0° to 400°
48	0° to 250°
64	0° to 120°

Dual-Scale	
40	-70° to 50°C -90° to 130°F
43	0° to 300°C 40° to 570°F
68	10° to 150°C 50° to 300°F

## How To Order

**B** = Bottom mounted

**G** = Glass lens

**13** = 3" size

**50** = 1/2" NPT threaded connection

**R** = Recal feature included

**08** = 0° to 100°F temperature range

**04** = 4" stem length

**Example:** BG1350-R0804

Other ranges and scales may be available if justified by quantity.

## Application

These 3" [75 mm] thermometers are used extensively in the oil, chemical, food, paper, textile and power industries because of their ability to withstand rough treatment and difficult environments.

## Materials Of Construction\*

### Case, Stem, Bezel & Nut

Type 304 stainless steel case

### Dial

Aluminum

### Sensing Element

Bimetallic

### Lens

Glass (Acrylic or tempered glass available at extra cost)



## General Specifications\*

These thermometers are available with or without a recal feature. A 1/2" NPT threaded connection is standard. For greatest accuracy, the stem should be inserted at least 2" into liquids and 4" into gases. Prescribed accuracy is 1% of scale range. Each thermometer is hermetically sealed and dampened.

\* Materials and specifications are subject to change without notice.  
Pressure ratings subject to change due to temperature and other environmental considerations.

## How To Order

- B** = Bottom mounted
- G** = Glass lens
- 13** = 3" size
- 50** = 1/2" NPT threaded connection
- = Hyphen
- 0** = No special feature
- R** = Recal feature included
- 10** = 0° to 300°F temperature range
- 12** = 12" stem length

**Example:** RG1350-R1012

## Available Temperature Ranges

Fahrenheit	
01	-150° to 50°
03	-50° to 120°
08	0° to 100°
09	0° to 200°
10	0° to 300°
11	0° to 500°
12	0° to 800°
13	25° to 125°
14	30° to 240°
16	50° to 350°
17	50° to 400°
21	200° to 1000°
24	0° to 220°
25	-70° to 150°
49	0° to 250°

Centigrade	
28	-50° to 50°
29	-50° to 100°
30	-10° to 110°
31	0° to 50°
32	0° to 150°
33	0° to 200°
34	0° to 300°
35	0° to 400°
48	0° to 250°

Dual-Scale	
40	-70° to 50°C -90° to 130°F
43	0° to 300°C 40° to 570°F
68	10° to 150°C 50° to 300°F

Other ranges and scales may be available if justified by quantity.

11/03/10

## Application

These 4" [100 mm] thermometers are built to NEMA standards and used extensively on outdoor substation power transformers to indicate the occurrence and extent of overload through use of an optional maximum/minimum indicating pointer, which can be manually reset. Units with and without the extra pointer are used in many other permanent outdoor applications on engines or process operations not involving severe service conditions. Where rough handling or abuse is encountered, our 3" and 5" models are recommended.

## Materials Of Construction\*

### Case, Stem, Bezel & Nut

Type 304 stainless steel case

### Dial

Aluminum

### Sensing Element

Bimetallic

### Lens

Glass (Acrylic or tempered glass available at extra cost)



## General Specifications\*

These units are not recalibratable. A 1/2" NPT threaded connection is standard. For greatest accuracy, the stem should be inserted at least 2" into liquids and 4" into gases. Prescribed accuracy is 1% of scale range. Each thermometer is hermetically sealed and dampened. Maximum stem length on models with max/min pointer is 24", and minimum length is 4" on both models.

\* Materials and specifications are subject to change without notice.  
Pressure ratings subject to change due to temperature and other environmental considerations.

## Available Temperature Ranges

Fahrenheit	
08†	0° to 100°
10	0° to 300°
11	0° to 500°
12	0° to 800°
13†	25° to 125°
14	30° to 240°
17	50° to 400°
19†	150° to 750°
21	200° to 1000°
25	-70° to 150°

Centigrade	
30	-10° to 110°
33	0° to 200°
64	0° to 120°

Dual-Scale	
68	10° to 150°C 50° to 300°F

## How To Order

- R** = Rear mounted
- G** = Glass lens
- 14** = 4" size
- 50** = 1/2" NPT threaded connection
- = Hyphen
- 0** = No special feature
- M** = Maximum/minimum indicator feature
- 10** = 0° to 300°F temperature range
- 09** = 9" stem length

**Example:** RG1450-M1009

*Other ranges and scales may be available if justified by quantity.*

**†08, 13, & 19 are not available with max./min. option.**

11/03/10

## Application

These 5" [125 mm] thermometers are used extensively in oil and chemical processing plants and have been adopted as standard in the food, paper, textile and power industries as well because of their ability to withstand rough treatment and difficult environments.

## Materials Of Construction\*

### Case, Stem, Bezel & Nut

Type 304 stainless steel case

### Dial

Aluminum

### Sensing Element

Bimetallic

### Lens

Glass (Acrylic or tempered glass available at extra cost)

## General Specifications\*

This thermometer incorporates a recal feature. A 1/2" NPT threaded connection is standard. For greatest accuracy, the stem should be inserted at least 2" into liquids and 4" into gases. Prescribed accuracy is 1% of scale range. Each thermometer is hermetically sealed and dampened.

\* Materials and specifications are subject to change without notice.  
Pressure ratings subject to change due to temperature and other environmental considerations.

## How To Order

**B** = Bottom mounted

**G** = Glass lens

**15** = 5" size

**50** = 1/2" NPT threaded connection

- = Hyphen

**R** = Recal feature

**25** = -70° to +150°F temperature range

**15** = 15" stem length

**Example:** BG1550-R2515



## Available Temperature Ranges

Fahrenheit	
01	-150° to 50°
03	-50° to 120°
06	-40° to 160°
08†	0° to 100°
09	0° to 200°
10	0° to 300°
11	0° to 500°
12	0° to 800°
13†	25° to 125°
14	30° to 240°
16	50° to 350°
17	50° to 400°
19	150° to 750°
21	200° to 1000°
24	0° to 220°
25	-70° to 150°
49	0° to 250°

Centigrade	
30	-10° to 110°
31†	0° to 50°
32	0° to 150°
33	0° to 200°
34	0° to 300°
35	0° to 400°

Dual-Scale	
40	-70° to 50°C -90° to 130°F
43	0° to 300°C 40° to 570°F

Other ranges and scales may be available if justified by quantity.

†08, 13, & 31; 2 1/2" stem length is not available.



## Application

These 5" [125 mm] thermometers are used extensively in oil and chemical processing plants and have been adopted as standard in the food, paper and textile and power industries as well because of their ability to withstand rough treatment and difficult environments.

## Materials Of Construction\*

### Case, Stem, Bezel & Nut

Type 304 stainless steel case

### Dial

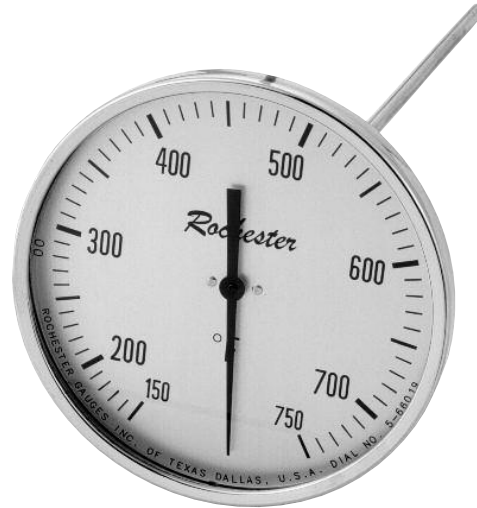
Aluminum

### Sensing Element

Bimetallic

### Lens

Glass (Acrylic or tempered glass available at extra cost)



## General Specifications\*

These thermometers are available with or without a recal feature - please specify your needs. A 1/2" NPT threaded connection is standard. For greatest accuracy, the stem should be inserted at least 2" into liquids and 4" into gases. Prescribed accuracy is 1% of scale range. Each thermometer is hermetically sealed and dampened.

\* Materials and specifications are subject to change without notice.  
Pressure ratings subject to change due to temperature and other environmental considerations.

## Available Temperature Ranges

Fahrenheit	
01	-150° to 50°
03	-50° to 120°
06	-40° to 160°
08†	0° to 100°
10	0° to 300°
11	0° to 500°
12	0° to 800°
13†	25° to 125°
14	30° to 240°
16	50° to 350°
17	50° to 400°
19	150° to 750°
21	200° to 1000°
24	0° to 220°
25	-70° to 150°
49	0° to 250°

Centigrade	
30	-10° to 110°
31†	0° to 50°
32	0° to 150°
33	0° to 200°
34	0° to 300°

Dual-Scale	
40	-70° to 50°C -90° to 130°F
43	0° to 300°C 40° to 570°F
68	10° to 150°C 50° to 300°F

## How To Order

- B** = Bottom mounted
- G** = Glass lens
- 15** = 5" size
- 50** = 1/2" NPT threaded connection
- = Hyphen
- 0** = No special feature
- R** = Recal feature
- 11** = 0° to 500°F temperature range
- 06** = 6" stem length

**Example:** RG1550-R1106

*Other ranges and scales may be available if justified by quantity.*

**†08, 13, & 31; 2 1/2" stem length is not available.**

11/03/10